

## Team App | Export Reports

Last Modified on 12/12/2023 5:11 pm AEDT

GameDay now allows administrators to export fixtures & member data in CSV format for the purpose of importing directly into Team App.

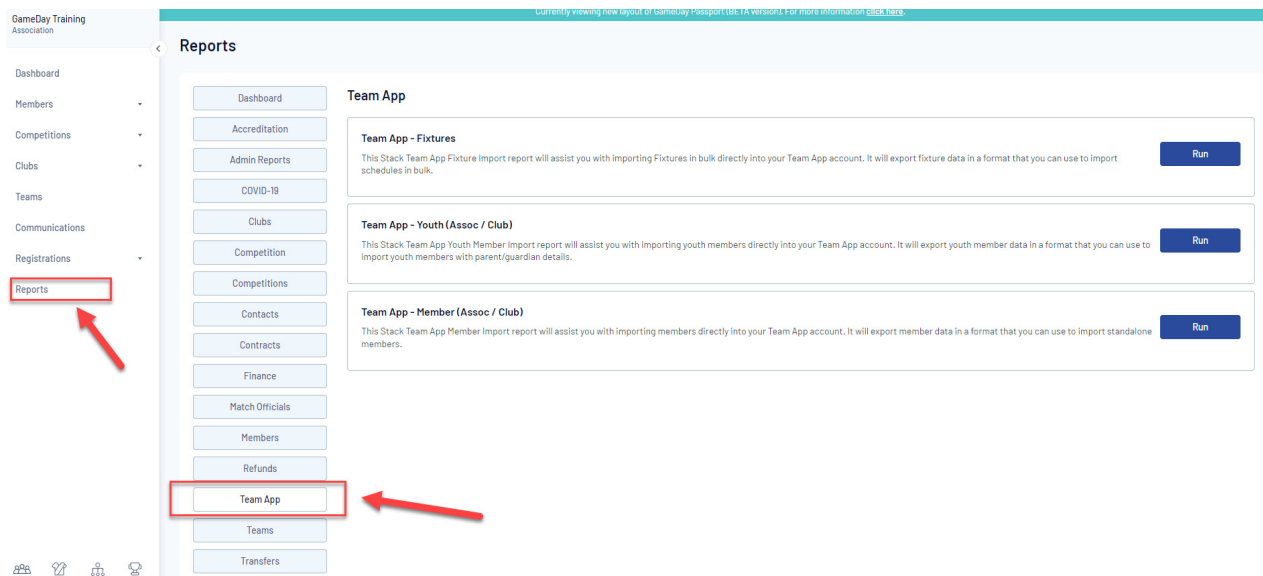
### Create your own Team App - it's FREE!

The following One Click reports are available to Association, Club & Team administrators:

- Team App - Fixtures
- Team App - Youth(Assoc / Club)
- Team App - Member (Assoc / Club)

These reports can be found under:

### 1. Reports > Team App



GameDay Training Association

Currently viewing new layout of GameDay Passport (Beta Version). For more information [click here](#).

Reports

Dashboard

Members

Competitions

Clubs

Teams

Communications

Registrations

Reports

Team App

Dashboard

Accreditation

Admin Reports

COVID-19

Clubs

Competition

Competitions

Contacts

Contracts

Finance

Match Officials

Members

Refunds

Team App

Teams

Transfers

**Team App**

**Team App - Fixtures**

This Stack Team App Fixture Import report will assist you with importing Fixtures in bulk directly into your Team App account. It will export fixture data in a format that you can use to import schedules in bulk.

Run

**Team App - Youth (Assoc / Club)**

This Stack Team App Youth Member Import report will assist you with importing youth members directly into your Team App account. It will export youth member data in a format that you can use to import youth members with parent/guardian details.

Run

**Team App - Member (Assoc / Club)**

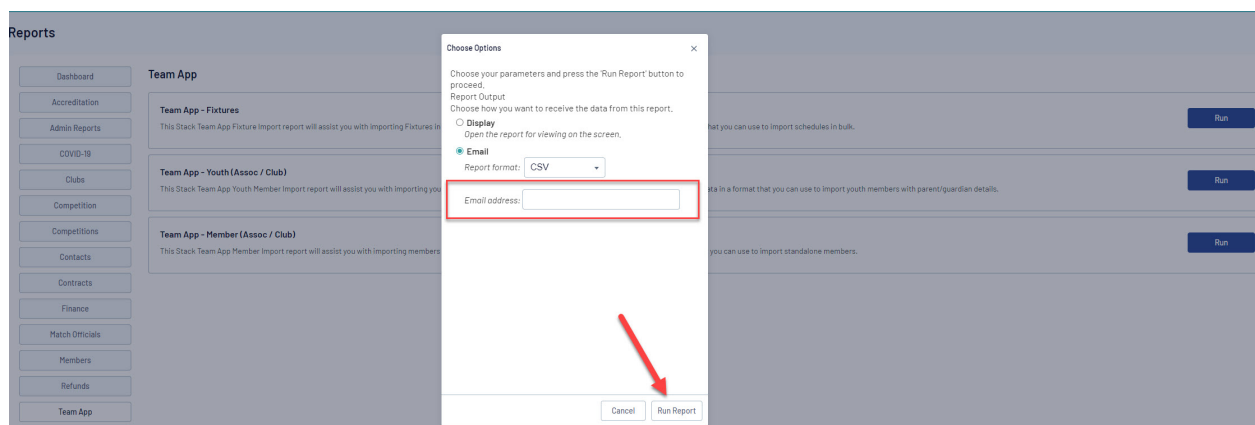
This Stack Team App Member Import report will assist you with importing members directly into your Team App account. It will export member data in a format that you can use to import standalone members.

Run

2. Choose a report and Select **'Run'**

3. A pop up window will appear providing admins two choices: **Display or Email**

Selecting Email will allow the report to be sent as either a TAB delimited or CSV file to the specified email address which is the best format for import into Team App





#### 4. Choose **Run Report**

A confirmation message will appear advising your data has been sent. This will be received into your inbox as a zip file.

Note: The selected data is based on the current season set by the association. This is an automatic process when the report is built.

### **Related Videos: Team App Import process:**

These reports are imported into Team App via your team's website dashboard, accessed by logging in at [www.teamapp.com](http://www.teamapp.com). Please view below videos for further instructions:

- Importing Members:  [Help Video - Importing Members](#)
- Importing Schedules:  [Help Video - Importing Events & Schedule](#)